

Your portable solution for batches scanning



Features:

- Fast scan rate up to 25 pages per minute and 50 images per minute
- 25-page Auto Document Feeder
- Front/ Rear Feeder accepts embossed card up to 1.25 mm and paper up to legal size and weight between 27 and 413 g/m²
- Auto crop and straighten a skew document
- Earth-friendly LED technology, no warming up required
- Press and scan to PDF, JPEG, BMP, or GIF file and send to e-mail, printer, image editing tool, or cloud servers like Google Drive, Microsoft SharePoint
- Bundled with useful software applications including Avison Button Manager V2, AVScan X, Nuance PaperPort SE 14, Virtual Scanner Link
- Includes TWAIN and ISIS scanner driver
- Long page scanning: 11.8"

Compact and Portable

At 11.8 inches long and weighting only 1.5 kg, the Avison AD225 series incorporate a built-in automatic document feeder (ADF) and card scanner in a compact unit. With the innovative design of foldable ADF and front tray, the AD225 series are easy to travel with and lets you bring productivity of batches scanning to any workplace.

Two eject paths

If your single-page document is loaded from the front or rear feeder, the scanner provides two eject paths. Document can be ejected to the opposite side or to the same side of the feeder. Switch between these paths on the TWAIN user interface and select an eject path according to your need.

*Plastic card only available for front tray feeding



Convenient mobile scanning (AD225WN)

Built-in with Wi-Fi module, the AD225WN is able to wirelessly connect to your mobile device and let your mobile device directly instruct a scan and receive a scanned image.

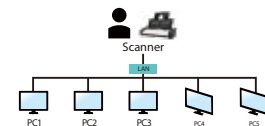


Easy to scan with a press of a button

With Avison's newly developed software application-Button Manager V2, the AD225 series scan both sides of a page directly to PDF, searchable PDF, JPEG, or to office applications like Word or Excel with a press of a button. The AD225 series automatically recognize the size of each document, detect and straighten for skew, and show images in their proper orientation. Plus, the scanned image can be sent directly to your specified destination including e-mail, printer, image editing software application, or even a cloud server such as Google Drive or Microsoft SharePoint.

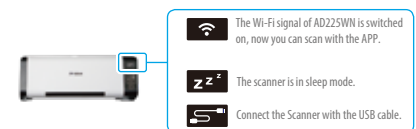
A network document scanner (AD225WN)

With the network port at the back side, this product allows you to use it as a network scanner. This means users in the intranet environment can share the scanner and obtain the scanned image from their individual computer.



LCD screen indicates scanner status

Scanner status can be graphically or even animatedly displayed on the LCD screen for easy operation.



Productive and flexible

The AD225 series is productive at scan rate of up to 25 ppm and 50 ipm through the built-in 25-page auto document feeder and accommodate document up to 14".

To capture high quality card image, the AD225 series also includes special front and rear tray to handle plastic ID cards, driver licenses, and even embossed cards up to 1.25 mm or paper up to legal size (8.5 x 14 in.) and weight between 27 and 120 g/m².

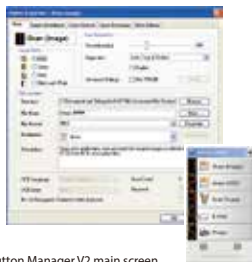
What we have bundled

The AD225 series come with TWAIN and ISIS drivers, and are bundled with a suite of powerful software applications that include Avison Button Manager V2, AVScan X, Nuance PaperPort SE 14 and Virtual Scanner Link .

Avison AD225/ AD225WN Sheetfed Scanner

Avison's Button Manager V2

-Completes your scan with a single step



The Button Manager V2 main screen

AVScan X

-The Intelligent Document Management Tool



The AVScan X main screen

Nuance PaperPort SE14

- The Professional Choice to Organize and Share Your Documents



PaperPort SE 14

Button Manager V2 makes it easy for you to scan and send your image to your favorite destinations with a press one button. Now the new version comes with an innovative feature to let you scan and automatically upload the scanned document to popular cloud repositories such as Google Docs, Microsoft SharePoint, or FTP. In addition, the iScan feature allows you to insert the scanned image or recognized text after optional OCR (Optical Character Recognition) process to your text editor such as Microsoft Word to get your job done easily and quickly.

Document Imaging is the very first step of Document Management. However, poor quality images can cause serious problems to later indexing or storing processes. It may increase scanning labor costs and lowers the OCR accuracy. AVScan X ensures all documents are checked and published at the time they are scanned such that the image quality is guaranteed before they are ready to use for other purposes. AVScan X is an intelligent scanning and electronic filing solution. AVScan X possesses distinct features that convert and index scanned information into electronic documents for easy storage and fast retrieval.

Scan, Share, Search, and Organize Documents on your PC.

Overwhelmed with paper? PaperPort SE 14 can help to simplify the chaos by organizing your paper documents-documents, receipts, photos, and more-into digital files on your files on your desktop. PaperPort SE 14 is Nuance's most popular scanning and document management solution, carefully designed specifically for home office use. Part traditional file cabinet, part digital- document desktop, PaperPort SE14 is the fastest and easiest way to scan, share, search, and organize your documents.



PAPERPORT SE 14



Avison Button Manager V2

AVScan X



Specifications	AD225/ AD225WN
Paper Feeding:	ADF 25-page capacity
Scanning Technology:	Contact Image Sensor (CIS)
Document Size:	Min. 50 x 50 mm Max. 216 x 356 mm
Scanning Speed:	25 PPM / 50 IPM (Color, A4, 200 dpi) 25 PPM / 50 IPM (Color, A4, 300 dpi)
Paper Thickness:	(ADF) 27~120 g/m ² (7~31 lb.) (Front / Reat Feeder) 27~413 g/m ² (7~110 lb.)
ID Card Thickness:	Up to 1.25 mm (only available for front tray feeding)
Long Page Mode:	3000 mm
Optical Resolution:	600 dpi
Output Resolution:	75, 100, 150, 200, 300, 400 and 600 dpi
Output Formats:	B/W, greyscale, 24-bit color
File Formats:	BMP, PNG, GIF, JPEG, PDF, Searchable PDF Multi-Page TIFF, TIFF, RTF, TXT, XPS, DOC, XLS, PPT, DOCX, XLSX, PPTX, HTML.
Bundled Software:	Avison Button Manager V2, Avison AVScan X, PaperPort SE 14, Virtual Scanner Link
Interface/Drivers	USB 2.0 / TWAIN, ISIS/ Built-in Fast Ethernet (AD225WN)
Network connection	RJ-45 Ethernet 10/100/1000 Mb, Wi-Fi
Power Supply:	Input: 100-240 VAC, 50/60 Hz Output: 24V , 1.5A
Power Consumption:	Operation: 15 W Sleep: 1.9 W Ready: 9W Off: 0.26 W
Environmental Factors:	Operating temperature: 10°C to 35°C (50°F to 95°F) Operating humidity: 10% to 85%
Dimensions (W x D x H):	299 x 104 x 74 mm
Weight:	1.5 kg
Recommended Daily	3,000 sheets
Scanning Volume:	
Multi-feed Detection:	Ultrasonic Sensor

We have endeavored to ensure that the information in this manual is accurate and that Avison is not responsible for printing or typographical errors. The above configuration is for reference only. The actual configuration may vary. Avison reserves the right to change, without notice, the specifications, features, and product names mentioned in this document are trademarks of their respective companies. We remain the third party product is for reference only and Avison does not warrant these products nor is responsible for the efficiency or use of these products.

System

- CPU: Intel® Core i3 (2.1GHz) or Higher
- Memory: 1GB (32bit Windows)
2GB (64bit Windows)
- DVD-ROM: DVD ROM Drive
- USB: USB2.0 Port (USB 3.0 compatible)
- Windows® Operating System:
- Windows® XP, Vista, 7, 8,X,10 (32 & 64 bit)

Contents

- Scanner
- Power Supply
- Quick Guide
- USB 2.0 Cable
- CD-ROM includes:
- Scanner Driver
(TWAIN / ISIS Driver)
- Avison Button Manager V2
- Avison AVScan X
- Nuance PaperPort SE 14
- Virtual Scanner Link

Function and Package List

Model	AD225	AD225WN
Wi-Fi	NO	YES
Ethernet	NO	YES



Avison
www.avision.com